

# Secure network and WAN traffic.



100% Packet Delivery

Built-in-Security

Leading SLAs

24/7 Monitoring

**70% of Customers list security as their first concern regarding migration to SD-WAN.**

**Projected 58% annual growth rate for SD-WAN over next 5 years.**

Higher Network Quality

Greater Agility and Flexibility

High Performance

Manage Threats and Risk

Improve Cost Efficiency

Scale your network easily

- Ensure Seamless Failover Between Multiple Links.
- Get centralized management, and reliable and agile application delivery that SD-WAN provides.
- Real-time usage data and analytics about your entire network as well as your sites and users.

- Easy to use, centralized portal with enhanced visibility and unprecedented control to manage your network in real-time.
- Full life cycle SD-WAN services.
- Unique WAN Optimization & QOS Features.
- Add new sites with the click of a button.
- Business Continuity - Ensure your vital connections are up and running even if your primary network goes down.
- Increase application performance.
- Gain end-to-end management.
- Get insights into your network performance.
- The Norstar management portal delivers real-time reporting and analytics.
- With our top-line solutions, your voice and video calls are uninterrupted even if one connection goes down.
- Continuous link and path monitoring.
- Application prioritization.
- End-to-end encryption.

## AWARD-WINNING, CLOUD-DELIVERED SD-WAN SOLUTION

From solution design and implementation to deployment and on-going management.



## Optimize Your Connectivity

**SD-WAN enables businesses to cost-effectively shape their network traffic and drive WAN performance.**

**99.999%+ UPTIME - Rapid, near instantaneous convergence and application-specific failover occurs in cases of performance degradation or broadband failure.**

## **Your next generation solution has arrived**

Lower Cost of Ownership

MPLS Alternative

Quality of Service

**Fully Managed. Feature-Rich. Cost-Effective.**

### **SD-WAN BENEFITS:**

Increases reliability and security over WAN

Allows for load sharing across multiple connections

Seamless integration with legacy network protocols

Centralized control and management plane

Supports multiple connection types, from MPLS to broadband to LTE

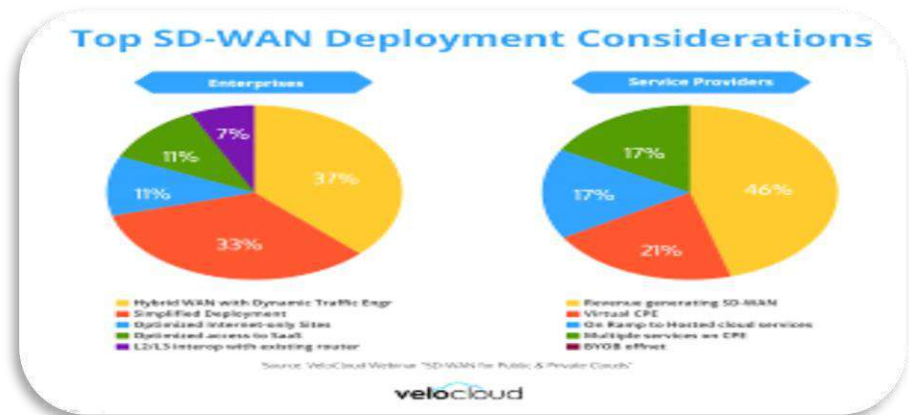
Dynamic SLA-based application traffic engineering

Supports aggregation of multiple networking services within the same physical device

Supports zero-touch provisioning for easy mass deployment of hardware

**Improve WAN Costs & Performance, Increase Branch Security**

Centralized policy manager  
 Automated centralized control  
 Data security  
 Streamlined operations



- Interactive map shows end-to-end network, infrastructure and virtual health.
- Automatically route your traffic across the best available connection.
- Increases reliability and security over WAN.
- 99.99% + Uptime- Rapid, near instantaneous convergence and application-specific failover occurs in cases of performance degradation or broadband failure.
- Have visibility from the branch to Norstar's hosted data center. Know what is happening throughout the entire pipeline.
- Continuous link and path monitoring.
- Improve Cost Efficiency.
- Provides highly secure data connectivity over any transport.
- Application Benefits - Optimize application performance with direct, secure access to enterprise and cloud applications real-time.
- Performance Benefits- Receive reduced packet loss, jitter protection, and dynamic packet steering to the Norstar hosted data center.
- End-to-End Protection - Have protection from the branch to Norstar's hosted data center. This provides the ability to properly troubleshoot and pinpoint issues should they arise, anywhere.
- Allows for load sharing across multiple connections.
- Recognize cost savings while retaining robust connectivity of a secure and redundant network regardless of business size.

- Through our user-friendly web portal, you'll enjoy an on-demand view of all the sites and devices on your network, as well as performance metrics for all your applications.
- Dynamic SLA-based application traffic engineering.
- Supports zero-touch provisioning for easy mass deployment of hardware.
- Visibility into how everything is connected and dynamically responds to interactions to give faster time-to-answer.

## Bandwidth Bonding

Customers large and small are able to combine the bandwidth of multiple network connections for increased speed.

**No longer are businesses required to pay heavy premiums for QoS – our system will manage the flow of traffic between sites so that your calls and video conferences remain crisp and clean.**

## Features:

- Works across ANY combination of circuits
- Reduce Costs- Lowers WAN OpEx and CapEx costs, and overall total cost of ownership.
- Increase application performance
- Redundancy and traffic flow efficiency
- Continuous link and path monitoring
- Application aware firewall
- Assign application priority over multiple Internet links regardless of the speed or provider
- Bring your own broadband or leverage our broad range of nationwide connectivity options – or do a combination of both.
- reduced customer-provided network management

- Security and threat management
- Improved end-user experience
- PCI / HIPAA Compliance
- Create Branch Agility- Faster integration of a new location
- lower operating and capital costs
- Let Norstar manage everything, from network design to implementation and support.
- Optimize Application Performance- Dynamically optimizes traffic over multiple links
- End-to-end encryption
- Simplify network management
- Optimize and improve visibility
- A scalable solution that grows with your needs
- In-Depth Reporting- Through an easy-to-use web portal, administrators can access network performance metrics and customized reporting.
- Full network performance and health reporting
- SLA-Backed quality of service up to 99,999%.

## **Always Connected**

Norstar lets you combine any Internet connection type from any carrier and Failover between them. No packet loss, no dropped calls.

## **SD-WAN THE NEXT EVOLUTION IN NETWORK MANAGEMENT.**

**SD-WAN enables businesses to cost-effectively shape their network traffic and drive WAN performance.**

## **MORE BENEFITS:**

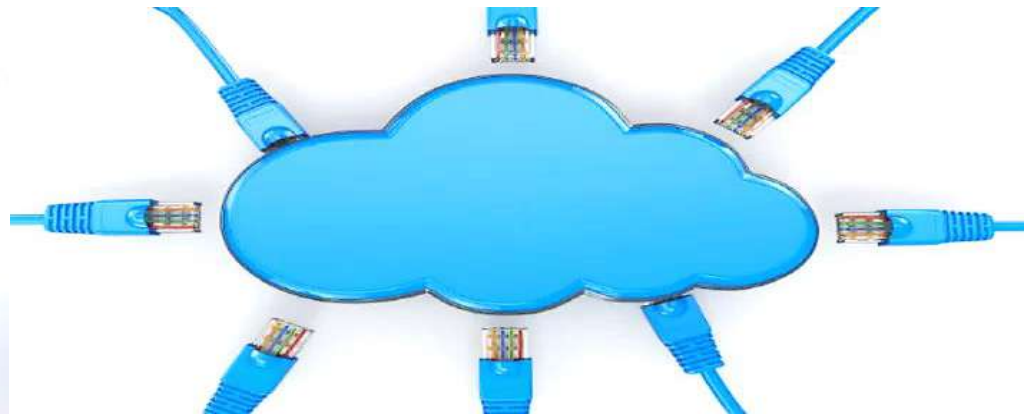
- Easy To Deploy & Manage
- Continuous link and path monitoring

- We'll provide the hardware, software, licenses, and management
- Leverage low-cost business-class broadband Internet to deliver superior performance.
- Reduce Costs
- Automation and traffic steering with the ability to prioritize traffic
- Simplify Branch Network
- Optimize Application Performance
- Deliver Branch Agility
- Application prioritization
- (Fully Managed or Bring Your Own Broadband)
- Local Internet Offload
- WAN Acceleration
- Fully Interoperable with MPLS
- SLAs to Leading Cloud Service Providers
- Internet-as-WAN meets explosive bandwidth demand efficiently and at low cost
- Improve network management with information at your fingertips with instant access to key performance indicators (KPIs)
- Provides real-time alerts and notifications of potential network issues, including worm alerts, intrusion detection and unauthorized devices
- Gain insight about Internet usage at each network location with detailed usage reporting. Set thresholds to help control data costs
- End-to-end encryption and Quality of Service (QoS) for all SD-WAN traffic, plus optimization for all branch Internet and private cloud
- End-to-End Visibility
- Transform inexpensive broadband Internet into an enterprise-grade secure WAN without a data center headend, while improving the performance of your existing WAN.
- Maximize throughput, reliability, and performance of private MPLS and broadband Internet with application steering and link impairment remediation technologies.
- Quality Performance
- High Network Resiliency

# Engineered to optimize and simplify.



**LOWER YOUR NETWORK COSTS**  
**RELIABLE, SECURED SERVICE**  
**BRING YOUR OWN CONNECTIONS**



**APPLICATION INTELLIGENT ROUTING**  
**NETWORK ACCELERATION**

<input checked="" type="checkbox"/> View All Definitions	SD-WAN	SD-WAN Enterprise
<a href="#">IPsec VPN</a>		
<a href="#">Application Performance Monitoring</a>	Session-level	Packet-level
<a href="#">Load Balancing</a>	✓	✓
<a href="#">3G/4G Failover</a>	✓	✓
<a href="#">Dynamic Path Selection/Bandwidth Aggregation</a>	✗	✓
<a href="#">Voice / Real-time Application Failover</a>	✗	✓



<u>Forward Error Correction</u>	X	✓
<u>Managed Internet Access / Single Ingress IP</u>	X	✓
<u>Bi-directional Priority Routing</u>	X	✓
<u>High Availability (HA) CPE</u>	✓	✓
<u>Router / Firewall Configuration</u>	✓	✓
<u>Advanced Firewall and Unified Threat Management (UTM)</u>	Optional	Optional
<u>Maximum WAN Links</u>	2	6
<u>Implementation Design and Engineering</u>	✓	✓
<u>Up/Down Link Monitoring</u>	✓	✓
<u>Proactive Circuit Restoration</u>	✓	✓
<u>Policy and Configuration Change Outsourcing</u>	✓	✓
<u>Branch Deployment Support</u>	✓	✓
<u>WiFi Management</u>	Optional	Optional
<u>Lifetime Updates and Support</u>	✓	✓
<u>30 Day Satisfaction Guarantee</u>	✓	✓



**Maximize throughput, reliability, and performance by defining your network topology such as traffic routing, VPN, COS, and application policies.**

### **End To End Protection:**

Have protection from the branch to Norstar's hosted data center. This provides the ability to properly troubleshoot and pinpoint issues should they arise, anywhere.

### **WAN Optimization:**

Optimize application performance over hybrid or internet links with direct, secure access to enterprise and cloud applications. SD-WAN provides consolidated monitoring and visibility across multiple.

**QoS For Everyone:** With Norstar, businesses are no longer required to pay heavy premiums for QoS – our system will manage the flow of traffic between sites so that your calls and video conferences remain crisp and clean.

### **Application Visibility & Control:**

You are given the ability to monitor all network activity in real time with analytics and reporting and get alerts for any potential problems.

### **All Included:**

We'll provide the hardware, software, licenses, and management—you just bring your network!

## VeloCloud™ Architecture

All included: We'll provide the hardware, software, licenses, monitoring and management.

## Get A Free Evaluation

Helping companies save money and increase network control with Comprehensive SD-WAN Solutions.

**Our network Solutions Engineering team partners with you to determine the right sized SD-WAN package for your business.**

Cloud Security + SD-WAN = Enhanced Network Performance



**Or Call Customer Service 1-888-755-4589**